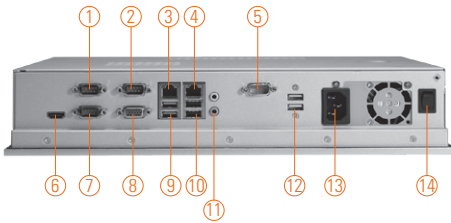
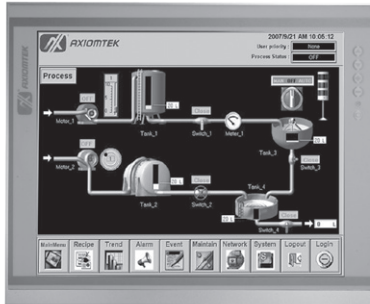


# P1177S-881

17" SXGA TFT 5th/4th Generation Intel® Core™ i7/i5/i3, Celeron® & Pentium® Processor Slim Industrial Touch Panel Computer

NEW



- |   |                                 |
|---|---------------------------------|
| 1. 1 x RS-232/422/485 with 5V & 12V (COM 1) | 8. 1 x VGA                      |
| 2. 1 x RS-232/422/485 with 5V & 12V (COM 3) | 9. 2 x USB 3.0                  |
| 3. 1 x RJ45 for Gigabit Ethernet (LAN1)     | 10. 2 x USB 2.0                 |
| 4. 1 x RJ45 for Gigabit Ethernet (LAN2)     | 11. 1 x MIC-in, 1 x Line-out    |
| 5. 1 x RS-232 with 5V&12V (COM4)            | 12. 2 x USB 2.0                 |
| 6. 1 x HDMI                                 | 13. 1 x AC Plug                 |
| 7. 1 x RS-232/422/485 with 5V&12V (COM 2)   | 14. 1 x switch for power on/off |



## Introduction

The P1177S-881 is a multimedia 17" touch panel PC for kiosk application. It has a fashionable mechanism design and industrial-grade material front bezel which can avoid damage from chemical corrosion. To meet the demands of multimedia application, the P1177S-881 is powered by a high performance LGA1150 socket 5th/4th generation Intel® Core™ i7/i5/i3, Celeron® & Pentium® processor with the Intel® H81 Express chipset (Broadwell/Haswell). It features four COM ports, two Gigabit Ethernet and up to 16 GB memory of dual-channel DDR3 that delivers high computing capability for high performance-demanding applications. The industrial panel PC is most suitable for kiosk, factory and automation.

### Dual Monitor Display

The P1177S-881 supports VGA or HDMI simultaneously that features the use of dual display devices for increasing the area available for programs running on a single computer system. It not only increases larger screen viewing but also improves personal productivity.

### Speaker and WLAN Antenna Supported

The P1177S-881 features built-in speakers for kiosk application to display multimedia content program. It also supports WLAN module antenna (optional) for wireless network connectivity.

### Friendly Less Screw Design

Removing the back cover to maintain the system in unscrewing 3 screws only that saving your time and increasing our work efficiency many times.

## Features

- 17" SXGA TFT LCD display
- LGA1150 socket 5th/4th generation Intel® Core™ i7/i5/i3, Celeron® & Pentium® processor (Broadwell/Haswell)
- Intel® H81 chipset
- Easy installation: Less screw design for user's convenience
- 2 USB 3.0, 4 USB 2.0 and 4 COM ports
- Built-in speakers and optional Wi-Fi 802.11 b/g/n module
- Robust aluminum with IP65 compliant front bezel design
- The best C/P ratio for HMI solution



▲ Side view

## Specifications

Front Bezel	Aluminum with IP65/NEMA 4 rugged protection	
LCD Panel	Display Type	17" SXGA TFT LCD
	Brightness	250 nits
	Resolution	1280 x 1024 pixels
	Viewing Angle	170°/160°
Main System	CPU	LGA1150 socket 5th/4th generation Intel® Core™ i7/i5/i3, Celeron® & Pentium® processor (Broadwell/Haswell)
	Chipset	Intel® H81
	System Memory	2 x 204-pin DDR3 SO-DIMM dual channel max. up to 16 GB
	BIOS	AMI UEFI BIOS with OA 3.0 built
	Storage	1 x 3.5" or 2 x 2.5" SATA HDD
	Watchdog Timer	255 levels, 1~255 sec.



## Specifications

IO Connector	3 x RS-232/422/485 with 5V & 12V 1 x RS-232 with 5V & 12V 1 x VGA 1 x HDMI 2 x USB 3.0 4 x USB 2.0 2 x 10/100/1000 Mbps Ethernet 1 x Audio (Mic-in/Line-out)
Expansion Interface	N/A
Touchscreen	5-wire resistive type Light transmission 79% 1 million activations (typical) at a single point
Power Supply	100 ~ 240VAC, 200W
Dimensions	410 mm (16.14") (W) x 80 mm (3.15") (D) x 338 mm (13.3") (H)
Packing Dimension	610 mm (24.02") (W) x 260 mm (10.24") (D) x 590 mm (23.23") (H)
Weight (net/gross)	6.6kg (14.55lb) / 10.6kg (23.37lb)
Environment	Operating Temperature: 0° ~ +45°C (+32°F ~ +113°F) Storage Temperature: -20°C ~ +65°C (-4°F ~ +149°F) Relative humidity: 10 ~ 90%@40°C, non-considering Operating vibration: 1.0 G, 5-500Hz, random
Certificate	CE

## Ordering Information

P1177S-881	17" SXGA slim industrial touch panel computer supports LGA1150 socket Intel® 4th generation Core™ i7/i5/i3, Pentium® & Celeron® processor, resistive touch screen and 100~240VAC
------------	--

\* Specification and certifications are based on options and may vary.

## Optional Accessories

82211770060E	VESA & WALL mount kit
82211770070E	Rack mount kit
82011750130E	2 x 2.5" HDD Bracket
E202003330	VM-101 (VESA ARM clamp type)
E202003329	VM-105 (VESA ARM wall-mount)
82211271000E	Wireless LAN kit

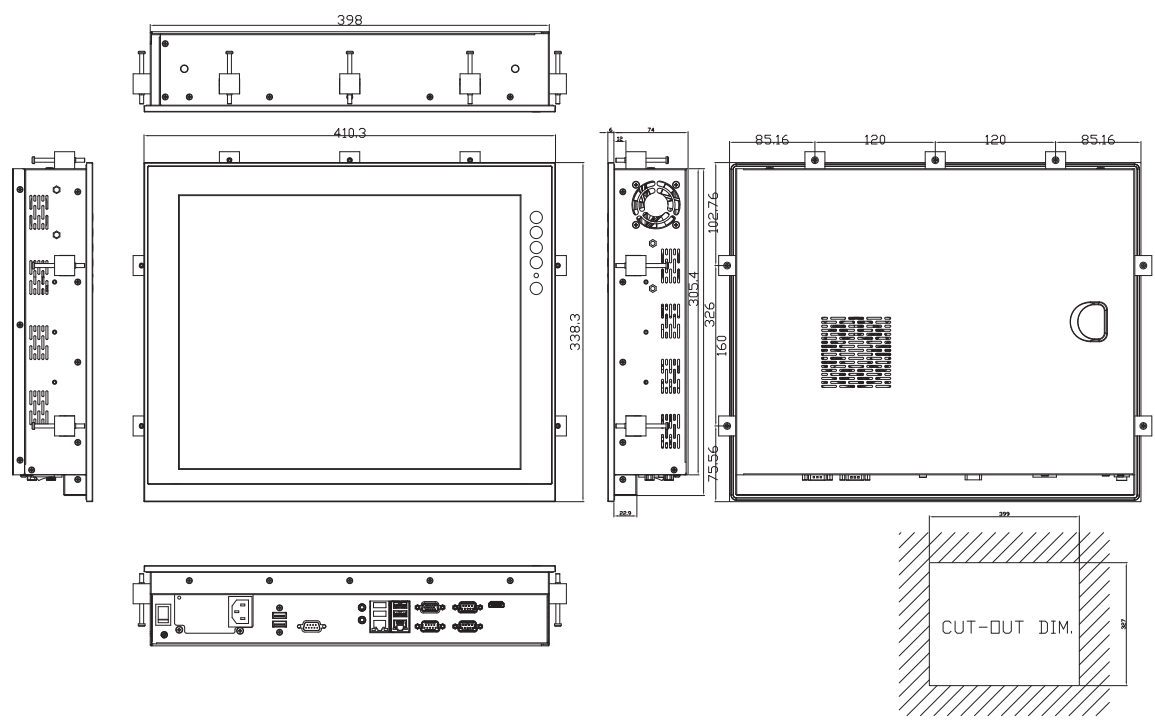
## Optional OS Installation

Windows®7/8.1
Windows® Embedded 7/8



▲ Less screw design

## Dimensions



Overview

Fanless Touch Panel Computers

Heavy-duty Fanless Touch Panel Computers

3

Industrial Touch Panel Computers

Industrial Touch panel Monitors

Infotainment Touch Panel Computers

Healthcare & Medical Solutions

Open Frame Panel Computers

Accessories

